

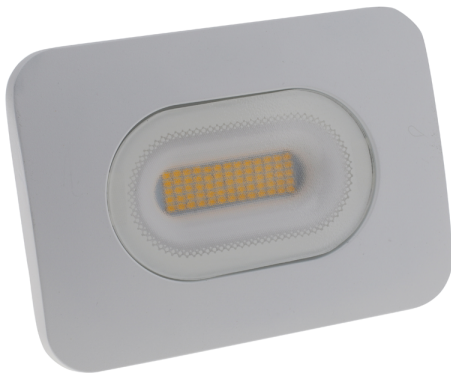
# LEYTON

## Product Data Sheet

### 20W IP65 LED slimline flood light white finish

Part No: **CULVER20-W**

- Features a quick fix bracket design allowing fixing without removing bracket from floodlight
- Slimline design
- 1 metre bare ended input lead



## Technical Specification

<b>Part No</b>	<b>CULVER20-W</b>
<b>Lumens</b>	1600
<b>CCT</b>	4000
<b>Colour Temperature</b>	Neutral White
<b>Finish</b>	White
<b>Voltage</b>	240

<b>Wattage</b>	20
<b>CRI</b>	80
<b>IP Rating</b>	65
<b>Dimmable</b>	N
<b>Lamp Holder</b>	Integrated LED
<b>Connector Type</b>	Bare End
<b>Length</b>	103
<b>Width</b>	143
<b>EAN</b>	5055530823952
<b>Depth</b>	35
<b>Class 1 or 2 or 3</b>	I
<b>Material / Made From</b>	Metal