

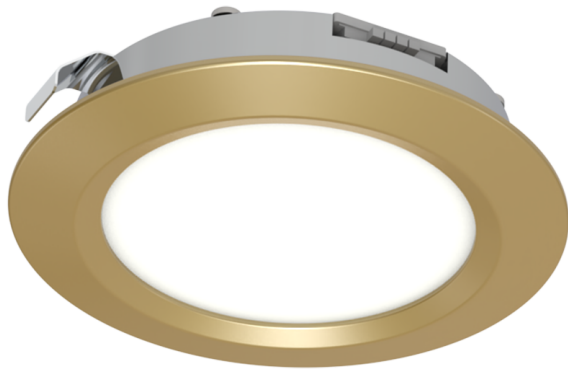
LEYTON

Product Data Sheet

4CCT cabinet downlight brushed brass

Part No: **DLD-BBR-4CT**

- Opal diffuser for uniformed dotless light
- Requires a colour temperature controller
- Requires 12V LED driver
- 2m input lead with top plug



Technical Specification

Part No	DLD-BBR-4CT
Lumens	160Lm
CCT	2700K, 3000K, 4000K, 6000K
Colour Temperature	CCT
Finish	Brushed brass

Voltage	12
Wattage	3W
CRI	80°
IP Rating	20
Dimmable	Y
Lamp Holder	Integrated LED
Connector Type	TOP
Depth	14.5
Diameter	63
Cut Out	53
Class 1 or 2 or 3	II
Material / Made From	Aluminum+PC
Unit of sale	1
Price	each