

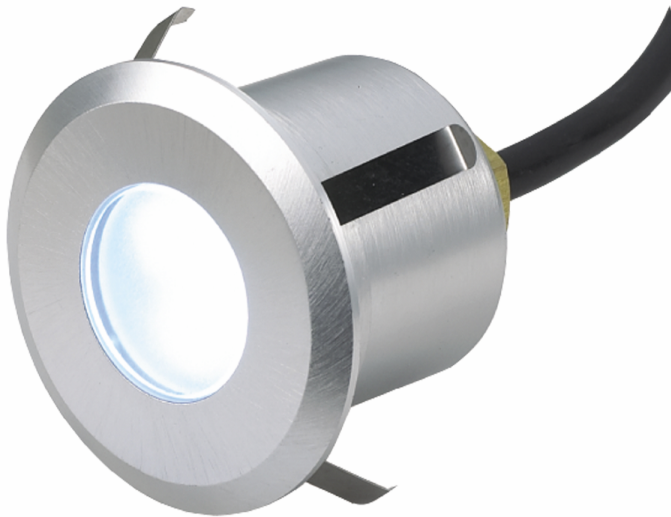
# LEYTON

## Product Data Sheet

### Cara RGB ground light

Part No: **GR-CARA**

- Requires RGB controller
- Requires 12V LED driver
- 200mm bare ended input lead



### Technical Specification

<b>Part No</b>	<b>GR-CARA</b>
<b>Colour Temperature</b>	RGB
<b>Finish</b>	Brushed Nickel
<b>Voltage</b>	12
<b>Wattage</b>	1.8
<b>CRI</b>	80
<b>IP Rating</b>	65

<b>Dimmable</b>	Y
<b>Lamp Holder</b>	Integrated LED
<b>Connector Type</b>	Bare End
<b>Depth</b>	58
<b>Diameter</b>	60
<b>Cut Out</b>	50
<b>Class 1 or 2 or 3</b>	II
<b>Material / Made From</b>	Metal
<b>EAN</b>	5055530819726