

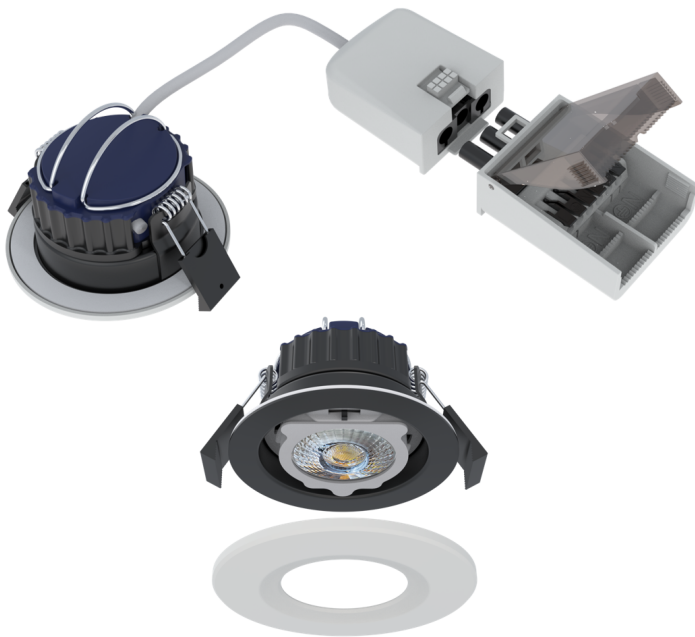
LEYTON

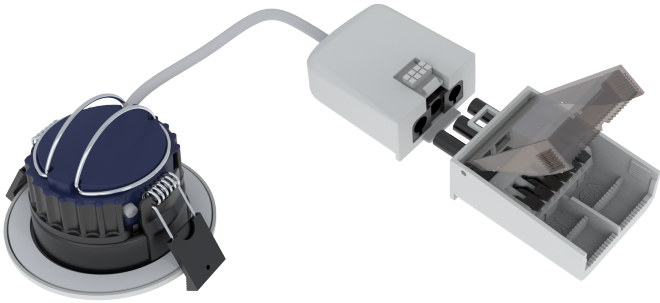
Product Data Sheet

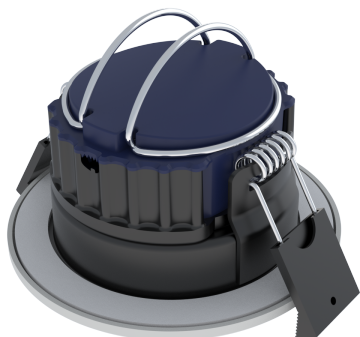
JADE 8W CCT LED fast fix IP65 dimmable fire rated 4 colour temperature switchable

Part No: **JADE-4CT**

- Fast fix split driver
- Colour temperature switchable between 2700, 3000, 4000 and 6000K
- 780lm -2700k, 800lm - 3000k, 900lm - 4000k & 850lm - 6000k
- Switched from front under bezel
- Supplied with white bezel, other bezel colours available sold separately
- 60° Beam Angle
- 0-100% Dimmable
- 30,60,90 minute fire rated - timber joist
- Engineered joist tested including i-joist & posi joist - details on request







Technical Specification

Part No	JADE-4CT
Lumens	780-900
CCT	2700-6000
Colour Temperature	CCT
Finish	White
Voltage	240
Wattage	8
CRI	80
IP Rating	65
Dimmable	Y
Lamp Holder	Integrated LED
Depth	45
Diameter	87
Cut Out	70
Class 1 or 2 or 3	II
EAN	5055530831100