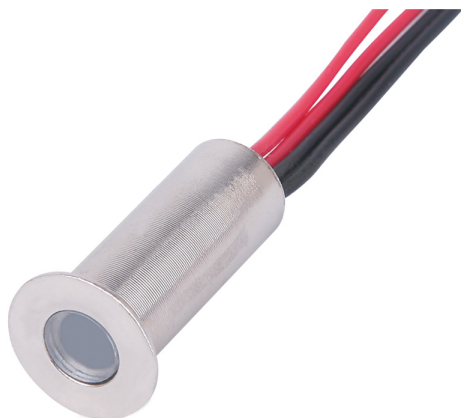


## Product Data Sheet

### **Microdisc LED plinth single head - 4000k**

Part No: **LED-PL2-NW**

- Neutral white single head additional light to be used with 4 light kit





## Technical Specification

<b>Part No</b>	<b>LED-PL2-NW</b>
<b>CCT</b>	4000
<b>Colour Temperature</b>	Neutral White
<b>Finish</b>	Brushed Nickel
<b>Voltage</b>	12
<b>Wattage</b>	0.2
<b>CRI</b>	80
<b>Dimmable</b>	N
<b>Lamp Holder</b>	Integrated LED
<b>Depth</b>	28
<b>Diameter</b>	14
<b>Class 1 or 2 or 3</b>	II
<b>Material / Made From</b>	Metal
<b>Unit of sale</b>	1
<b>Price</b>	each