

LEYTON

Product Data Sheet

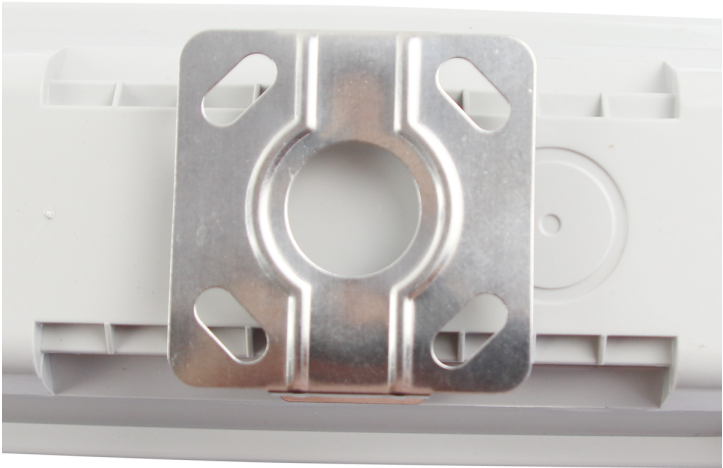
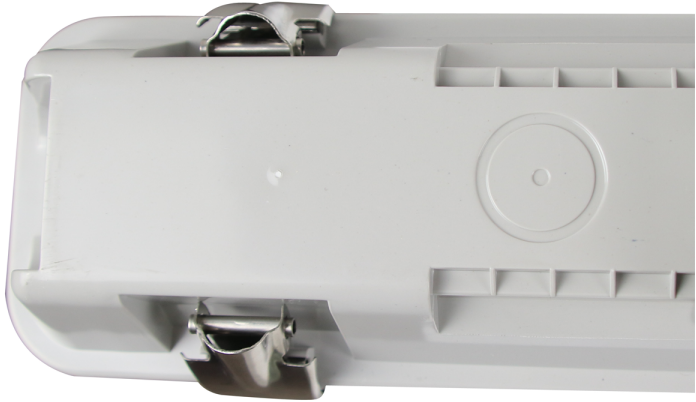
Taurus 6ft 35W single non corrosive LED batten with microwave sensor

Part No: **TA-6S-MW**

- Easy install
- Stainless steel clips
- Ideal for car parks, underpasses, workshops and industrial & storage facilities
- One knock out gland on single versions
- Three knock out glands on twin versions
- Microwave sensor module available (MW)
- 3hr emergency versions available (EM)
- Microwave & emergency version available (MWEM)









Technical Specification

| | |
|---------------------------|-----------------|
| Part No | TA-6S-MW |
| Lumens | 4025 |
| CCT | 4000 |
| Colour Temperature | Neutral White |
| Finish | White |
| Voltage | 240 |
| Wattage | 35 |
| CRI | 80 |
| IP Rating | 65 |
| Dimmable | N |
| Lamp Holder | Integrated LED |
| Length | 1828 |
| Width | 88 |
| Depth | 73 |
| Class 1 or 2 or 3 | I |

Material / Made From

Plastic

EAN

5055530825499