

LEYTON

Product Data Sheet

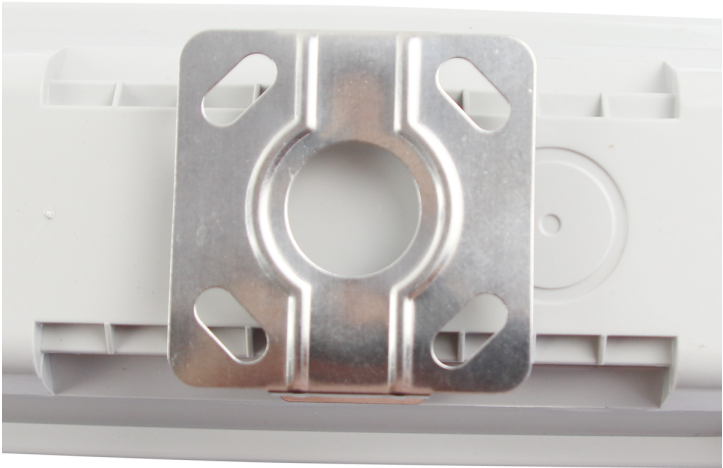
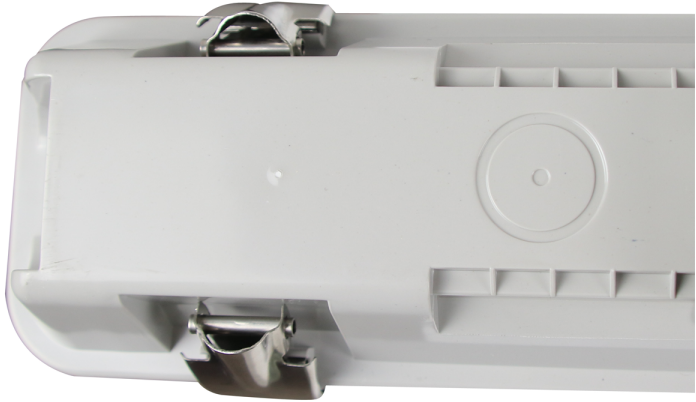
Taurus 6ft 65W twin non corrosive LED batten

Part No: **TA-6T**

- Easy install
- Stainless steel clips
- Ideal for car parks, underpasses, workshops and industrial & storage facilities
- One knock out gland on single versions
- Three knock out glands on twin versions
- Microwave sensor module available (MW)
- 3hr emergency versions available (EM)
- Microwave & emergency version available (MWEM)









Technical Specification

Part No	TA-6T
Lumens	7475
CCT	4000
Colour Temperature	Neutral White
Finish	White
Voltage	240
Wattage	65
CRI	80
IP Rating	65
Dimmable	N
Lamp Holder	Integrated LED
Length	1828
Width	118
Depth	73
Class 1 or 2 or 3	I

Material / Made From

Plastic

EAN

5055530825512